

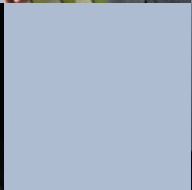
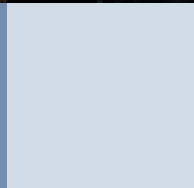
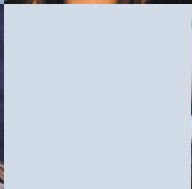


# LEEDSLIEDER+

Friday 12 October –  
Sunday 14 October 2007

'A superb new festival for  
song lovers'

The Sunday Times



# Welcome to LEEDSLIEDER+

President Lord Harewood, Honorary Patron Elly Ameling

## Filling the city with song!

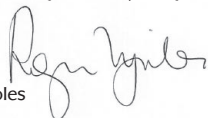
A weekend feast of top quality performances of art songs in many languages...including English!

Artistic Director **Roger Vignoles** internationally recognized as one of the leading piano accompanists of today.

Guest of Honour **Dame Janet Baker**

Recitals by world-famous singers **Robert Holl, Mark Padmore, Measha Brueggergosman** and prizewinning young singers and pianists including **Elizabeth Watts, Ronan Collett, Nicky Spence, Anna Grevelius, Nicholas Rimmer, Gary Matthewman**

**Hearing Pictures. Leeds Lieder+** explores the theme of imagery: Beethoven in pastoral mood, Britten in Hardy country, seascapes from Ireland to Debussy, Cubism with Poulenc - each of the "Hearing Pictures" programmes is designed to appeal to the inner eye and the ear. The centre-piece of the whole festival, Schubert's *Winterreise*, is a set of twenty-four extraordinary landscapes by the greatest painter in song of all time.



Roger Vignoles

Dedicated to art song of all kinds, the Festival also features

- Roger Vignoles in **Conversation** with Dame Janet Baker
- **Masterclass** for young singers and pianists
- **World premières**
- **Chinese Classical Song** recital and workshop
- **Composers and Poets Forum**
- **Discovering Lieder+**
- **Cabaret** of Freudian songs

### FESTIVAL+ tickets

Buy tickets for six different events and get a 10% discount, for ten different events we'll give you 15% discount!

We hope you enjoy this unique Festival, which would not be possible without the support of our Sponsors, Patrons and Friends to whom we say a huge thank you. Find out about how you can play your part overleaf.

Have a wonderful weekend!



Jane Anthony

Founder and Chairman of Leeds Lieder+

Jane Anthony



Roger Vignoles



Mark Padmore



Sally Beamish



**Friday 12 October**

5.30pm

West Yorkshire Playhouse Foyer

## Welcome Party

**FREE – tick the box on the booking form**

**Friday 12 October**

8.15pm

The Venue, Leeds College of Music

## Hearing Pictures 1 Winter Words

**Mark Padmore** tenor  
**Roger Vignoles** piano

**Beethoven** *An die ferne Geliebte, Op 98*

**Sally Beamish** *Four Songs of Hafez (world première)*

**Schubert** *Five Lieder*

**Britten** *Winter Words, Op 52*

**Pre-concert talk by**

**Sally Beamish and Paul Reid**  
**7.15pm**

**Price: £20 concessions £16**

*Commission supported by  
RVW Trust*

**Saturday 13 October**

10.00am – 5.00pm

Recital Room, Leeds College  
of Music

## Composers & Poets Forum

**FREE - reserve your place on  
the booking form.**

Roger Vignoles and Jane Anthony invite you to an informal welcome party to launch **Leeds Lieder+** 2007. We will be joined by some of the artists and highlight some of the exciting events. Jane will present performances by the young people who have taken part in our education projects.

It is over fifty years since Britten's song cycle *Winter Words* received its first performance at Harewood House, sung by Peter Pears. Pears was a great communicator, and that quality is shared by this evening's soloist Mark Padmore. Britten's cycle comes back to its home city, with the first song cycle of them all, Beethoven's wonderful *An die ferne Geliebte* and our first **Leeds Lieder+** commission of the weekend, *Four Songs of Hafez* by Sally Beamish; settings of the 14th century Persian Sufi poet.

Mark Padmore: 'an elegant, beautifully poised performance. His phrasing is immaculate and unforced, his tone unfailingly true and pleasing.'

THE SUNDAY TELEGRAPH

This day-long forum is the culmination of work initiated in June when a group of student composers from the Conservatoires' Composers Forum met a group of poets in a creative venture to encourage the composition of new art song. Today they return to perform and discuss these new works. We welcome other aspiring poets and composers to take part from the floor.

**Saturday 13 October**

10.30am – 11.30am

**The Clothworkers Centenary  
Concert Hall, University of Leeds**

## Hearing Pictures 2 The Sea

**Elizabeth Watts** soprano  
**Håkan Ekenäs** baritone  
**Roger Vignoles** piano

**Haydn, Ireland, Dibdin, Walton,  
Britten, Schubert, Schumann  
Mendelssohn, Wolf, Berlioz,  
Fauré, Debussy, Borodin**

**Pre-concert talk: Roger Vignoles**  
9.45am - 10.15am

**Price: £12 concessions £10**  
*In memory of Margery Wilson*

**Saturday 13 October**

12.30pm – 1.30pm

**The Venue, Leeds College of Music**

## Chinese Song Concert

**Yanchuan Zhang** singer  
**Yi Jiayi** zhu di  
**Jian Danxi** gu zhen

**Pre-concert talk by 11.45am**

**Price: £10 concessions £8**

**Saturday 13 October**

2.30pm – 3.30pm

**The Venue, Leeds College of Music**

## Conversation Piece

**Dame Janet Baker**  
with **Roger Vignoles**

**Price: £10 concessions £8**  
*Supported by  
The Helena Oldacre Trust*

Movement, mass, light, shade, wind, waves, drama, pageantry – these are only a few of the elements that make the sea a perfect subject for music, as illustrated in this programme, from Haydn's rumbustious *Sailor's Song* to Britten's *Seascape*. Perfect for both armchair sailors and those addicted to the "flung spray and the blown spume".

"...and there was the vocally stunning young soprano, Elizabeth Watts..."

OPERA NOW (MICHAEL WHITE)  
- JULY 2005

Yanchuan Zhang, prize-winning singer from the Sichuan Conservatory, Chengdu, China, presents a programme of songs tracing the history of song in China from the traditions of the Han dynasty to the contemporary art song being written in this century. Yanchuan will be accompanied by traditional instrumentalists, famous in China, playing zither and Chinese flute.

Dame Janet Baker, one of the greatest singers of our time, needs no introduction. Her career encompassed recitals, concerts, opera and oratorio, with repertoire from Handel to Britten, in all of which she excelled. In conversation with Roger Vignoles she will share insights gained during her long and distinguished career, illustrated by her choice of recordings.

**Saturday 13 October**

4.30pm – 5.30pm

**Holy Trinity Church, Boar Lane**  
**Made in Yorkshire**

**Julia Riley** mezzo soprano  
**Nicholas Watts** tenor  
**Gary Matthewman** piano

**Purcell arr. Tippett**  
**Butterworth A Shropshire Lad**  
**Jonathan Dove**

*All you who sleep tonight*

**Warlock**  
**Britten Folksong Arrangements**

**Price: £10 concessions £8**  
*Supported by Elizabeth Arnold*

**Saturday 13 October**

6.00pm – 7.00pm

**Recital Room, Leeds College  
of Music**

## Composers and Poets Showcase

**Price: £5 concessions £4**

**Saturday 13 October**

8.15pm – 9.30pm

**The Venue, Leeds College of Music**

## Hearing Pictures 3 Winterreise

**Robert Holl** bass-baritone  
**Roger Vignoles** piano  
**Schubert Winterreise**

**Pre-concert talk by  
Martin Pickard 7.30pm**

**Price: £22 concessions £18**

**Venue Bar, Leeds College of Music**  
**Post-Concert  
Reception**

In this elegant Georgian church we celebrate home-grown talent. Our three prize-winning young artists were all born in Yorkshire and are beginning to carve impressive careers. They have devised a programme which includes music by George Butterworth, brought up in York, and Peter Warlock, who studied with Bradford-born Delius, contrasting with other English composers.

'definitely Lieder plus' THE TIMES  
2005

This recital will include performances of the best new works from the Composers and Poets Forum. An unpredictable but fascinating concert, which we hope may point out future directions for art song

The internationally renowned Dutch bass-baritone, Robert Holl, has given recitals in Salzburg, Vienna, Hohenems, Edinburgh and the Russian Winter Festival. He received the honorary title of Kammersänger from the city of Vienna. To hear Robert Holl sing such an incomparable work as Schubert's *Winterreise* will be an illuminating and memorable experience.

'possibly the greatest living Lieder singer'  
HILARY FINCH THE TIMES 2007

For sponsors, patrons and performers, by invitation only.

Yanchuan Zhang

Elizabeth Watts

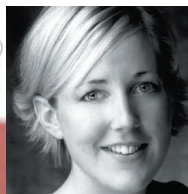
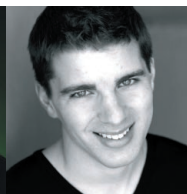
Gary Matthewman

Dame Janet Baker

Robert Holl

Julia Riley

Nicholas Watts



**Saturday 13 October**

10.00pm – 11.00pm

Recital Room, Leeds College  
of Music

## Dreamlives

Julia Sporsén soprano

Sergey Rybin piano

Directed by Sebastian Harcombe

Price: £12 concessions £10

*Dreamlives* is a dark cabaret of Lieder by Strauss, Berg and Schoenberg that explores the impact of Freud's ideas on the music of his time. Staged in the manner of a psychoanalytical regression, this unique, haunting and critically acclaimed piece of music theatre was premièred in London in 2006.

'Julia Sporsén is hugely impressive'  
THE TIMES

**Sunday 14 October**

9.30am – 11.30am

The Recital Room, Leeds College  
of Music

## Chinese Song Workshop

Price: £5 concessions £2

In this interactive workshop, you can learn about the techniques of singing developed in China over the centuries, and discover the distinctive oriental sounds of Chinese traditional instruments with our artists from the Sichuan Conservatory of Music in Chengdu, China.

**Sunday 14 October**

10.00am – 1.00pm

The Clothworkers Centenary  
Concert Hall, University of Leeds

## Masterclass

Roger Vignoles

Price: £12 concessions £8

Supported by

D'Oyly Carte Charitable Trust

Roger Vignoles, one of Britain's outstanding musicians, regularly accompanies the greatest singers in the world. Also known internationally as a teacher, today he works with four post-graduate duos who have been nominated by their colleges as having great potential. Hear the stars of the future before they enter the demanding professional arena.

**Sunday 14 October**

10.30am – 12.00 noon

Meet at Leeds Bridge

## Brigade Walk

FREE – tick the box on the  
booking form

This year Leeds celebrates the 800th anniversary of the creation of Briggate, its principal street, with its merchants' houses, historic yards and splendid shopping arcades. Walk leader, Dr Kevin Grady, Director, Leeds Civic Trust.

**Sunday 14 October**

12.00 noon – 1.00pm

## The Venue, Leeds College of Music Discovering Lieder+ Enchanted Kingdoms

Nicky Spence tenor

Anna Grevelius mezzo soprano

Nicholas Rimmer piano

Paul Whittaker signer for  
the deaf

Price: £6 concessions £4

An unconventional, innovative and interactive programme of songs inspired by the supernatural world of fairies and enchanted kingdoms ..... with dramatic and emotional signing for the deaf. A treat for everyone over the age of eight whether you've tried Lieder+ before or not!

'Songs are like 'mini-operas' and whether it be Scots song, Lieder, French song or even a bit of Russian, it's magic when we deliver a story.'  
NICKY SPENCE, nominated for a Classical Brit in 2007

**Sunday 14 October**

2.30pm – 3.30pm

## The Venue, Leeds College of Music Hearing Pictures 4 Le Travail du Peintre

Elizabeth Watts soprano

Ronan Collett baritone

Gary Matthewman piano

Nicholas Rimmer piano

Strauss Five Lieder

Poulenc *Le Travail du Peintre*

Hesketh *Shimmerwords and Idle Songs* (world première)

Copland/Ives/Foster Five songs

Pre-concert talk by

Kenneth Hesketh 1.45pm

Price: £12 concessions £10

Supported by The Harold Hyam

Wingate Foundation

Commission supported by

RVW Trust

Continuing the theme of Hearing Pictures, we have two of the prize-winning stars of the rising generation of British singers. Soprano Elizabeth Watts won the 2006 Kathleen Ferrier Prize, whilst baritone Ronan Collett carried off the prestigious Thierry Mermod Prize at the 2006 Verbier Festival. Leeds Lieder+ commission, Kenneth Hesketh's *Shimmerwords and Idle Songs* is a meditation on art as a reflection of ourselves and the world we live in.

'The baritone Ronan Collett, whose voice seems richer and warmer each time I hear it, is outstanding.'  
THE TIMES

Ronan Collett



Julia Sporsén



Nicky Spence



Anna Grevelius



Nicholas Rimmer



Paul Whittaker





**Sunday 14 October**

5.00pm

The Venue, Leeds College of Music

## Final Recital Cabaret Songs

**Measha Brueggergosman**

soprano

**Roger Vignoles** piano

**Britten, Schoenberg and Bolcom**

*Cabaret Songs*

**Roem** *Early in the morning,*

*For Poulenc*

**Poulenc** *Hotel, Voyage à Paris etc*

**Satie** *la Diva de l'Empire*

**Pre-concert talk by**

**David Hoult 4.15pm**

**Price: £15 concessions £12**

*Supported by*

*the Friends of Leeds Lieder+*

Rounding off the weekend on a lighter note, Roger Vignoles is joined by the outstanding young Canadian soprano Measha Brueggergosman in a programme that ranges from early 20th century Berlin and Paris to latter-day New York.

'a singer of rare gifts and artistic intensity'

SAN FRANCISCO CHRONICLE

**Sunday 14 October**

6.30pm

Venue Bar, Leeds College of Music

## Post-Festival Reception for Sponsors, Patrons, Friends and FESTIVAL+ ticket holders

Come and relax with us and meet other visitors to the Festival including **Leeds Lieder+** Honorary Patron Elly Ameling, Artistic Director Roger Vignoles and soprano Measha Brueggergosman.

Elly Ameling



Measha Brueggergosman



Roger Vignoles



## General Information

### Visiting Leeds

To find The Venue at Leeds College of Music follow signs to the West Yorkshire Playhouse, and use their car parks. The Venue is next door. All other venues except the Clothworkers Hall, are within walking distance.

The One Bar Inn at Leeds College of Music will be open all weekend from 9.00am till 10.00pm serving freshly made hot and cold food until 7.00pm each day. Please order food in advance as it is all freshly prepared. Ready made sandwiches and pasta and salad boxes will be available in the fridge at all times.

### Accommodation

Many convenient hotels offer weekend rates. For further details contact Gateway to Yorkshire on **freephone 0800 808050**, mentioning Leeds Lieder+ or:

**Leeds Tourist Information Centre**

City Station, PO Box 244, Leeds LS1 1PL

Tel: 0113 242 5242. E: [tourinfo@leeds.gov.uk](mailto:tourinfo@leeds.gov.uk)

or visit [www.visitleeds.co.uk](http://www.visitleeds.co.uk)

*Three examples of hotels with different prices bands close to the Venue are:*

£££

**Malmaison**, Swinegate, Leeds, LS1 4AG (offer a special price, inc. breakfast, for Leeds Lieder+ visitors. Please phone 0113 398 1005 quoting 'Leeds Lieder' for details). [www.malmaison.com](http://www.malmaison.com)

££

**Jury's Inn**, Kendell Street, Brewery Place, Leeds, LS10 1JF.

Tel: 0113 283 8800 [www.jurysdoyle.com](http://www.jurysdoyle.com)

£

**Etap**, 2 The Gateway North, Crown Point Road, Leeds, LS9 8BZ.

Tel: 0113 245 0725 [www.etaphotel.com](http://www.etaphotel.com)

**Further Information** including a map, details of venues, parking and local restaurants will be sent with your tickets.

### Booking Enquiries

You are advised to keep a record of your booking.

**The Box Office, Leeds College of Music**

3 Quarry Hill, Leeds LS2 7PD

**Tel: 0113 222 3434**

Mon – Fri 10am – 5pm

[www.lcm.ac.uk](http://www.lcm.ac.uk)

Other enquiries to:

**Leeds Lieder+ Festival Office,**

The Venue

Leeds College of Music.

**Tel: 0113 234 6956**

[info@leedslieder.org.uk](mailto:info@leedslieder.org.uk)

[www.leedslieder.org.uk](http://www.leedslieder.org.uk)

registered charity no 1105803

**LEEDS LIEDER+ gratefully acknowledges the generous support of:**

Arts Council England  
 Leeds College of Music  
 Olav Arnold Charitable Trust  
 Elizabeth Arnold  
 The Harold Hyam Wingate Foundation  
 RVW Trust  
 A & S Burton 1960 Charitable Trust  
 The Linden Charitable Trust  
 D'Oyly Carte Charitable Trust  
 Helena Oldacre Trust  
 The Tillett Trust  
 Leeds Philosophical and Literary Society  
 The Hinrichsen Foundation  
 Leeds City Council  
 Emerald  
 University of Leeds  
 Coutts & Co. Charitable Trust  
*and individual Sponsors, Patrons and Friends*



**We aim to**

- Introduce this magnificent music to a wider audience
- Inspire a new generation of musicians
- Commission new work and help to sustain the tradition of song writing

To realise this unique vision, we need your help. Please support us by becoming a Patron or Friend. Details on the booking form.

|   | Time                           | Concert  | Price  | Conc. price*                        | No of Tickets                 | Total                    |
|---|--------------------------------|--|--|-------------------------------------|-------------------------------|--------------------------|
| Friday<br><b>12</b><br>October  | 5.30pm - 6.30pm                | Welcome Party                                      | No ticket needed<br>Tick box to attend.                              |                                     | <input type="checkbox"/>      |                          |
|   | 8.15pm                         | Hearing Pictures 1<br><i>Winter Words</i>          | £20  | £16                                 | <input type="checkbox"/>      |                          |
| Saturday<br><b>13</b><br>October  | 10.00am - 5pm                  | Composers and Poets Forum                          | FREE –<br>reserve your place   |                                     | <input type="checkbox"/>      |                          |
|   | 10.30am - 11.30pm              | Hearing Pictures 2<br><i>The Sea</i>               | £12  | £10                                 | <input type="checkbox"/>      |                          |
|   | 12.30pm - 1.30pm               | Chinese Song Concert                               | £10  | £8                                  | <input type="checkbox"/>      |                          |
|   | 2.30pm - 3.30pm                | Conversation Piece<br><i>Dame Janet Baker</i>      | £10  | £8                                  | <input type="checkbox"/>      |                          |
|   | 4.30pm - 5.30pm                | Made in Yorkshire<br><i>English Song</i>           | £10  | £8                                  | <input type="checkbox"/>      |                          |
|   | 6pm - 7pm                      | Composers and Poets Showcase                       | £5   | £4                                  | <input type="checkbox"/>      |                          |
|   | 8.15pm - 9.30pm                | Hearing Pictures 3<br><i>Winterreise</i>           | £22  | £18                                 | <input type="checkbox"/>      |                          |
|   | 9.30pm                         | Sponsors' and Patrons' Reception                   | FREE –<br>reserve your place   |                                     | <input type="checkbox"/>      |                          |
|   | 10.00pm - 11.00pm              | Dreamlives   | £12  | £10                                 | <input type="checkbox"/>      |                          |
|   | Sunday<br><b>14</b><br>October | 9.30am - 11.30am                                   | Chinese Song Workshop  | £5                                  | £2                            | <input type="checkbox"/> |
| 10am - 1pm  |                                | Masterclass<br><i>Roger Vignoles</i>               | £12  | £8                                  | <input type="checkbox"/>      |                          |
| 10.30am - 12.00pm   |                                | Briggate Walk                                      | FREE –<br>reserve your place   |                                     | <input type="checkbox"/>      |                          |
| 12pm - 1pm  |                                | Discovering Lieder+<br><i>Enchanted Kingdoms</i>   | £6   | £4                                  | <input type="checkbox"/>      |                          |
| 2.30pm - 3.30pm   |                                | Hearing Pictures 4<br><i>Le Travail du Peintre</i> | £12  | £10                                 | <input type="checkbox"/>      |                          |
| 5pm   |                                | Final Recital<br><i>Cabaret Songs</i>              | £15  | £12                                 | <input type="checkbox"/>      |                          |
| <b>DISCOUNTS</b>  |                                |  |  |                                     |                               |                          |
|   |                                |  | If you qualify for FESTIVAL+ tickets (6 events or more) deduct 10%   |                                     | <input type="checkbox"/>      |                          |
|   |                                |  | If you qualify for FESTIVAL++ tickets (10 events or more) deduct 15% |                                     | <input type="checkbox"/>      |                          |
| *Concessions: For all in full-time education, unemployed or disabled. Please state which applies.         |                                |  |  |                                     |                               |                          |
| Patrons and Friends are entitled to book during the priority period - join us at the right level for you. |                                |  |  |                                     |                               |                          |
| Patron  |                                |  | <input type="checkbox"/> £500  | <input type="checkbox"/> £250       | <input type="checkbox"/> £100 |                          |
| Friend  |                                |  | <input type="checkbox"/> £15 joint                                   | <input type="checkbox"/> £10 single |                               |                          |
| Tickets mailed to you in advance at a charge of 50p   |                                |  |  |                                     |                               |                          |
|   |                                |  |  |                                     |                               | <b>Total £</b>           |

## Booking Information

### Patrons and Friends

Become a Patron or Friend of **Leeds Lieder+** and access a range of benefits including priority booking, invitations to special events and advanced information. Just add your donation to the booking form

### FESTIVAL+ and FESTIVAL++ tickets!

Buy tickets for six or more different events, each worth £8 or more, and we'll give you 10% discount.

Buy tickets for ten or more different events each worth £8 or more and we'll give you 15% discount.

FESTIVAL+ and ++ tickets include priority booking, a free drink at the Welcome Party and the Post-Festival reception. They should be booked in one transaction through the Festival Box Office at Leeds College of Music.

### Priority booking period - postal booking only

**11 – 22 June**

Patrons and Friends – FESTIVAL+ or single tickets

General Public – FESTIVAL+ tickets only

### General booking

**from 25 June**

including telephone and internet booking Tel: 0113 222 3434 or [www.lcm.ac.uk](http://www.lcm.ac.uk) Visa, Mastercard, Delta and Switch/Maestro accepted Call 10.00am – 5.00pm Mon – Fri for instantly confirmed credit or debit card bookings. We are sorry but it is not possible to book FESTIVAL+ tickets on the internet.

**Booking Form** *Please complete both sides of this form in block capitals and send to:*

Box Office, Leeds College of Music, 3 Quarry Hill, Leeds LS2 7PD

Please make cheques payable to Leeds College of Music

|         |           |
|---------|-----------|
| Name    |           |
| Address |           |
|         |           |
|         | Postcode  |
| E-mail  | Telephone |

Tickets can be mailed to you in advance at a charge of 50p or can be collected in person at the box office.

#### Concessions

Concessions are only offered to students in full-time education, registered disabled and unemployed people.

#### Access

There is full wheelchair access to The Venue, Clothworkers Hall, West Yorkshire Playhouse and Holy Trinity Church.

#### Seating

Reserved seating will be allocated in The Venue and Recital Room. Tickets for the Clothworkers Hall and Holy Trinity are unallocated.

#### Concerts+Cocktails for 18 - 35s

Make it a social occasion, meet other like-minded people and help to promote live music.

Become a C+C ambassador and come FREE!

For more information please contact Lucy Appleyard:  
[C+C@leedslieder.org.uk](mailto:C+C@leedslieder.org.uk)  
0113 234 6956

Visit the **LEEDSLIEDER+** website

[www.leedslieder.org.uk](http://www.leedslieder.org.uk) or contact: [info@leedslieder.org.uk](mailto:info@leedslieder.org.uk)